

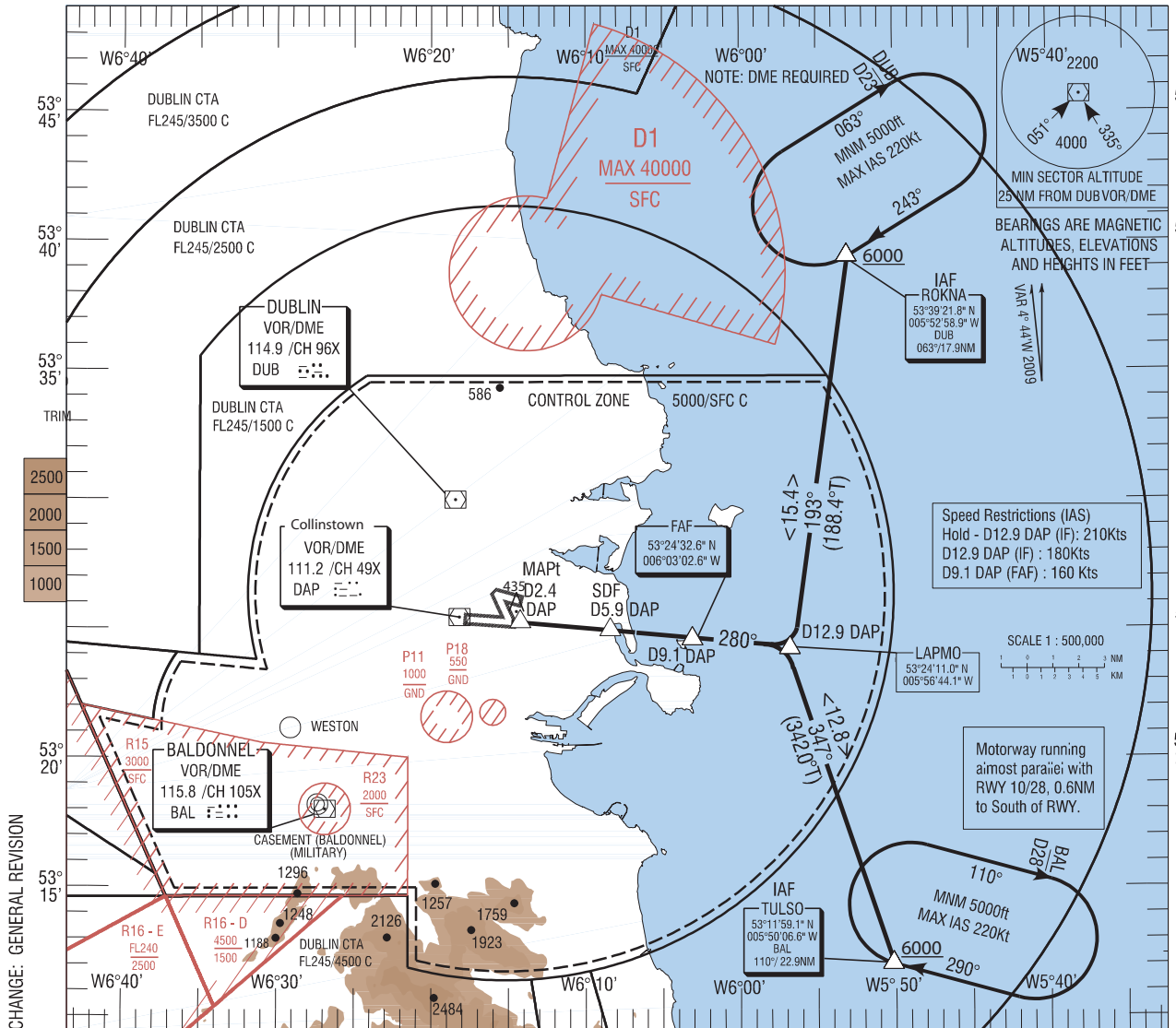
INSTRUMENT APPROACH CHART - ICAO

AERODROME ELEV 242 ft
 HEIGHTS RELATED TO THR RWY 28 - ELEV 202 ft

TWR 118.6
 APP 121.1
 GND 121.8
 ATIS 124.525

CONSULT NOTAM FOR LATEST INFORMATION

DUBLIN/DUBLIN
 VOR RWY 28
 (ACFT CAT A, B, C, D)

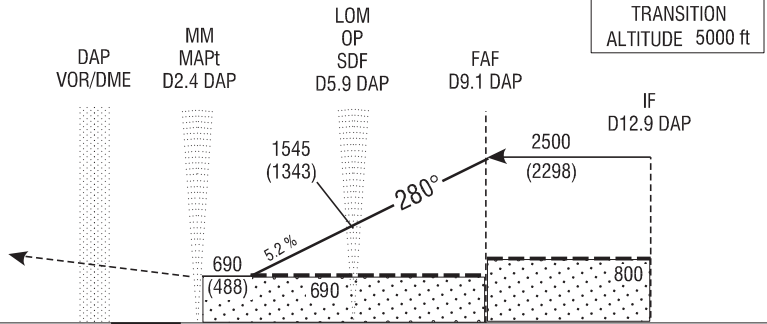


Mapping based on Ordnance Survey Ireland by Permission of the Government © Government of Ireland Permit Number 7109

CHANGE: GENERAL REVISION

MISSED APPROACH: Climb straight ahead to 3000ft. Contact ATC. (in the event of radio failure follow procedure on radio failure chart).

DAP DME READS D1.9 AT RWY 28 THR ELEV 202ft (THR RWY 28)



9 8 7 6 5 4 3 2 1 0 1 2 3 4 5 6 7 8 9 10 11 12 13
 NM FROM THR RWY 28

OCA (H)	A	B	C	D	Recommended Profile on Final Approach						
Straight - in Approach	← 690 (488) →				DME (DAP)	8.0	7.0	6.0	5.0	4.0	
					ALT (HT)	2205 (2003)	1890 (1688)	1570 (1368)	1250 (1048)	935 (733)	
VISUAL MANOEUVRING (These heights are AAL)	780 (538)	780 (538)	880 (638)	1100 (858)	Descent Rate 5.2%, (3°), 318ft/NM						
	940 (698) North of Rwy 28										kts
					ft / min	425	530	635	745	850	