

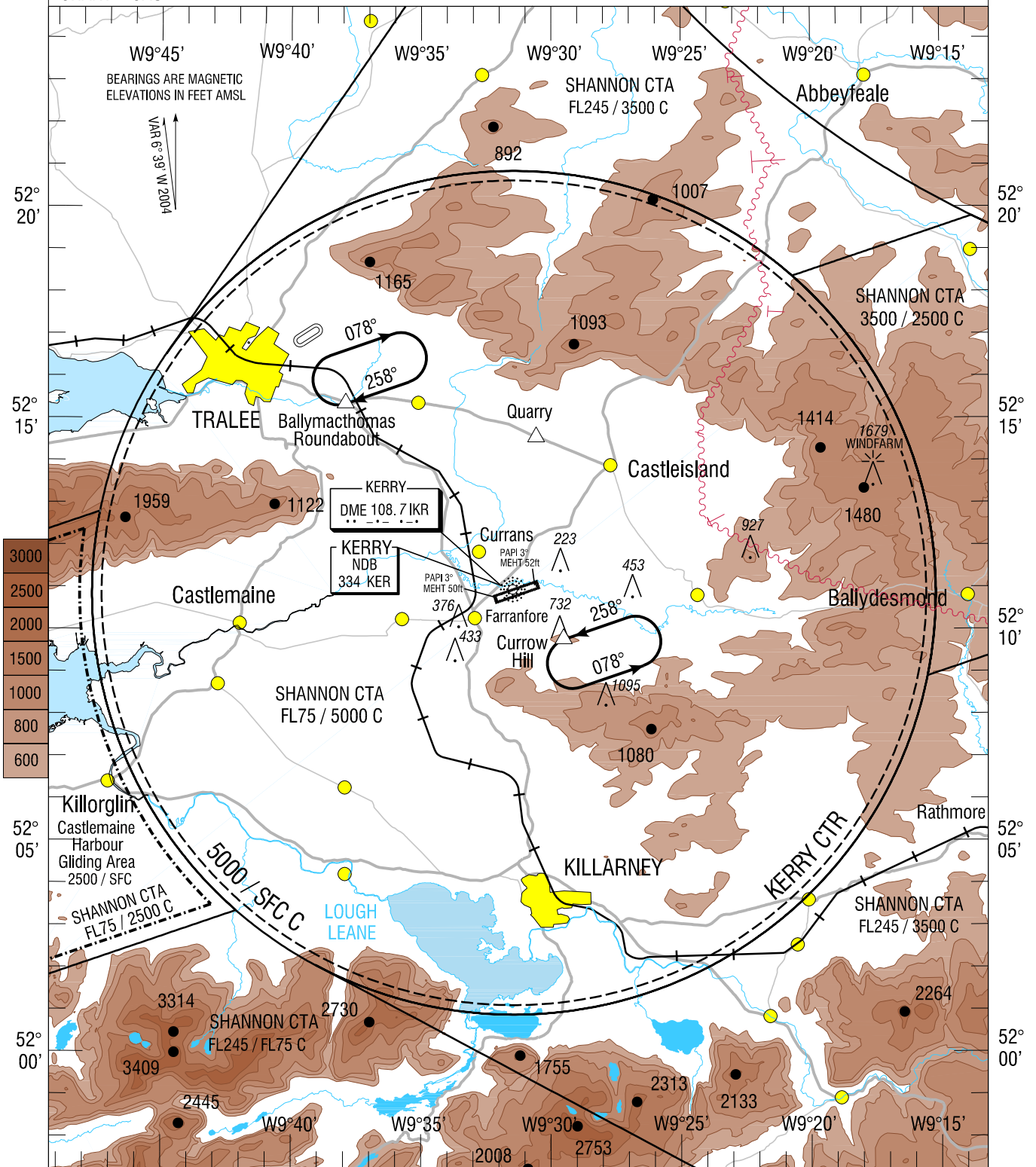
VISUAL APPROACH CHART - ICAO

AERODROME ELEV 112 ft

Tower 123.325
Shannon Control 124.7

CONSULT NOTAM FOR LATEST INFORMATION

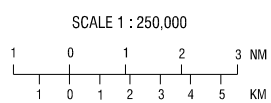
KERRY / KERRY VISUAL APPROACH



MINM ALT 1500ft
1 MIN

Visual Holding Pattern
(Based on TAS 120 kts)

Note 1: In the event of a radio failure :
- Aircraft from the West, route via Tralee to the Ballymachthomas Roundabout Hold
- Aircraft from the East, route via Killarney to the Currow Hill Hold
to receive landing instructions from the Control Tower using the ALDIS lamp.



Mapping based on Ordnance Survey Ireland by Permission of the Government © Government of Ireland Permit Number 7109

CHANGE: Magnetic Variation, Airspace Classification and Kerry DME.