

AERODROME CHART – ICAO 52 10 51.16 N AERODROME ELEV 112FT
009 31 25.62 W APRON ELEV 78FT

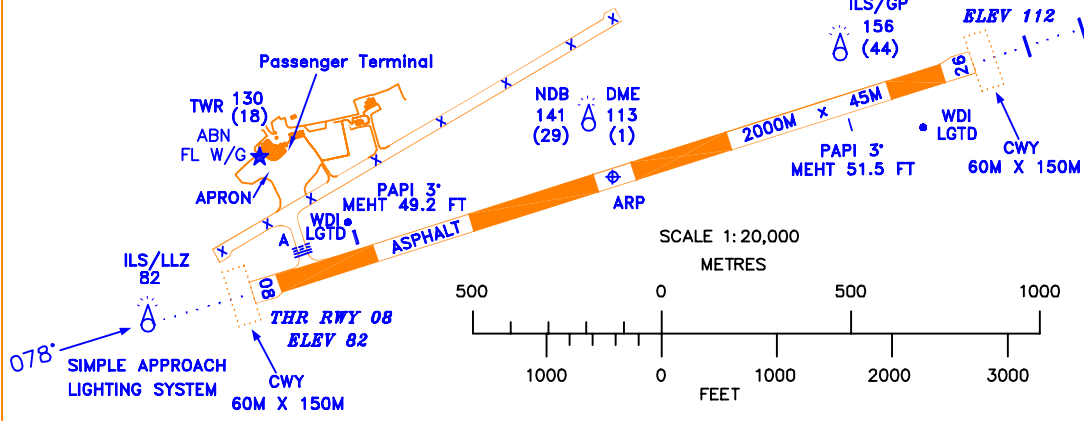
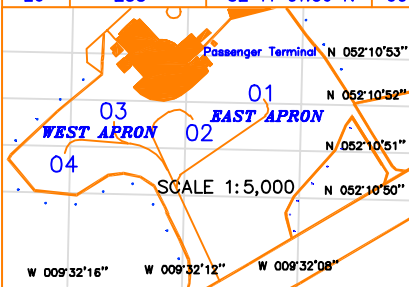
TWR 123.325
GND 121.6

CONSULT NOTAM
FOR LATEST
INFORMATION

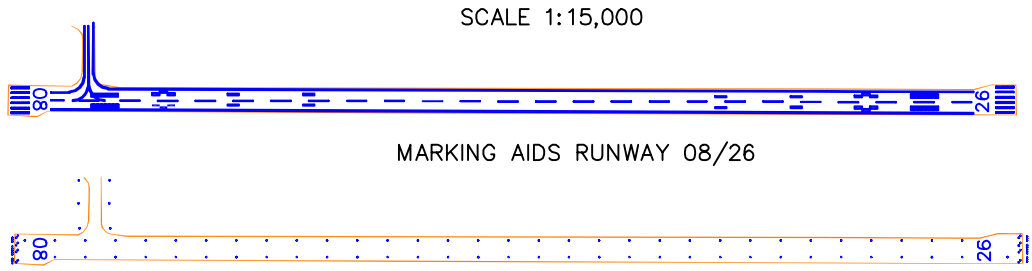
KERRY AIRPORT/ IRELAND

RWY	DIRECTION	THR		BEARING STRENGTH	LEGEND	
					AIRCRAFT STAND	1
08	078°	52 10 40.75 N	009 32 15.46 W	PCN 44/F/C/W/T	RUNWAY HOLDING POSITION MARKING	
26	258°	52 11 01.56 N	009 30 35.78 W		DISUSED PAVEMENT	X X X

BEARINGS ARE MAGNETIC.
LINEAR DIMENSIONS IN METRES.
ELEVATIONS IN FEET AMSL.
HEIGHTS IN FEET ABOVE AERODROME ELEVATION SHOWN IN BRACKETS.



AMENDMENT RECORD		
NO.	DATE	ENTERED BY



Stand	Latitude	Longitude	Max Wingspan	Max Length	Conditions
1	52 10 52.25 N	009 32 09.30 W	38.06	47.33	Self Manoeuvring.
2	52 10 51.30 N	009 32 11.37 W	28.89	36.40	Self Manoeuvring.
3	52 10 51.76 N	009 32 14.46 W	29.00	25.25	Self Manoeuvring.
4	52 10 50.58 N	009 32 16.22 W	29.00	25.25	Self Manoeuvring.

- NOTE 1: TAXIWAY A, EAST APRON : PCN 44/F/C/W/T.
- NOTE 2: WEST APRON : PCN 44/F/C/W/U.
- NOTE 3: TAXIWAY A : 23M WIDE.
- NOTE 4: RUNWAY 07/25 CLOSED UNTIL FURTHER NOTICE.
- NOTE 5: APRON SURFACE : CONCRETE AND ASPHALT.
- NOTE 6: FORWARD SCATTER VISIBILITY METER AVAILABLE ON APPROACH 26.

CHANGES: MAGNETIC VARIATION, MAX WINGSPAN AND MAX LENGTH.