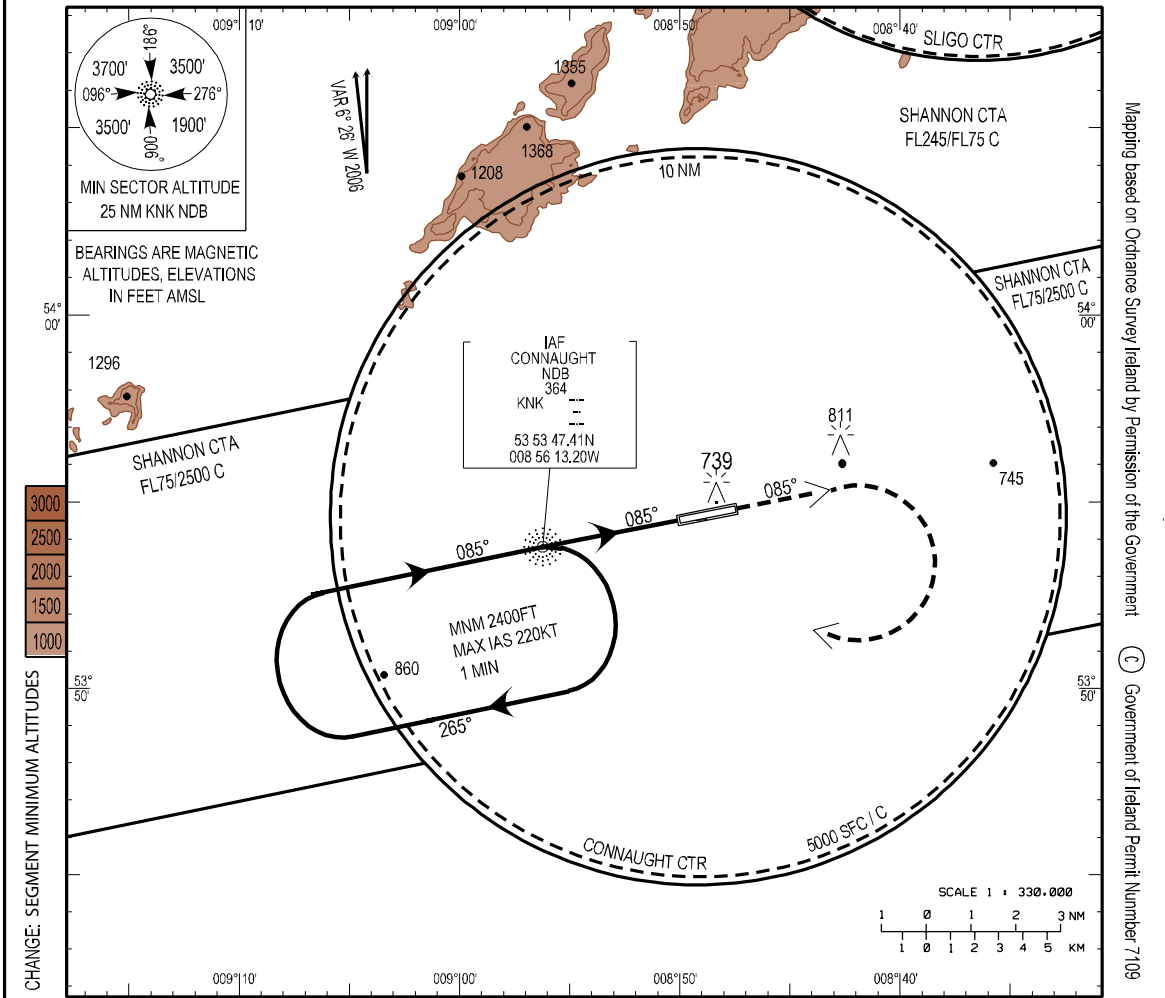


INSTRUMENT APPROACH CHART - ICAO	AERODROME ELEV 665ft HEIGHTS RELATED TO THR RWY 09 - ELEV 592ft	TWR 130.7 GND 121.9 Emerg 121.5	CONSULT NOTAM FOR LATEST INFORMATION	IRELAND WEST/KNOCK NDB RWY 09 (ACFT CAT A,B,C,D)
----------------------------------	--	---------------------------------------	--------------------------------------	--

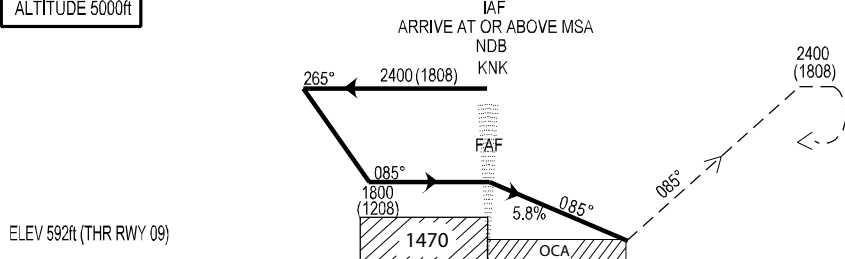


CHANGE: SEGMENT MINIMUM ALTITUDES

Mapping based on Ordnance Survey Ireland by Permission of the Government
Government of Ireland Permit Number 7109

TRANSITION
ALTITUDE 5000ft

MISSED APPROACH:
At the MAPt, climb on track 085° to 2400ft, turn right and return to KNK holding pattern. Contact ATC.



DISPLACED THR 153 M																													
	17	16	15	14	13	12	11	10	9	8	7	6	5	4	3	2	1	0	1	2	3	4	5	6	7	8	9	10	11
	NM FROM THR RWY 09																												
OCA (H)	A	B	C	D	Time FAF to MAPt 3.74 NM	Min:Sec	3:12	2:29	2:14	1:52	1:36	1:24																	
Straight - in Approach	← 980 (388) →				Ground Speed	Kts	70	90	100	120	140	160																	
CIRCLING	1060(395)	1160(495)	1260(595)	1360(695)	Rate of descent Gradient 5.8%	ft/min	411	528	587	704	822	939																	