

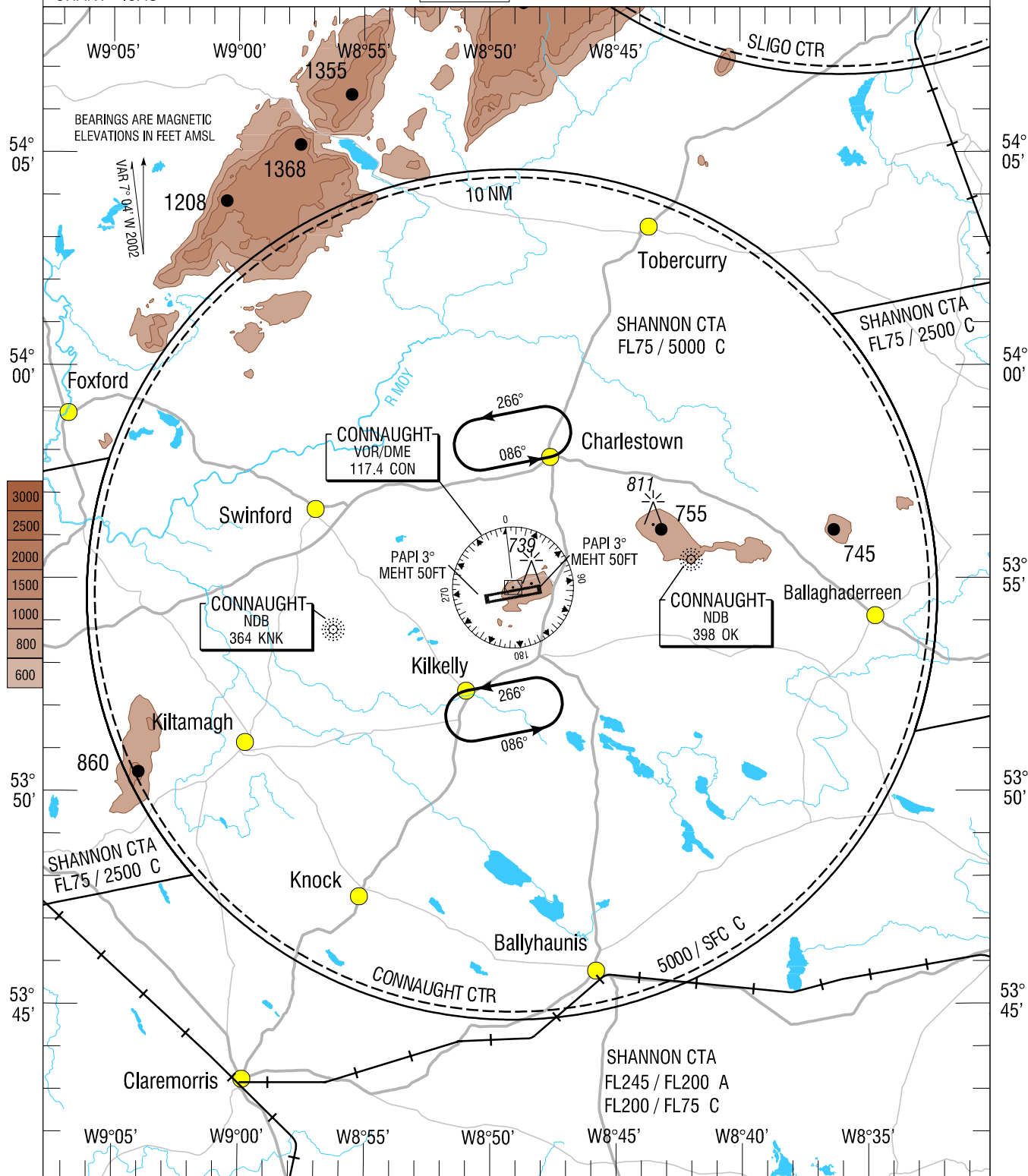
VISUAL APPROACH CHART - ICAO

AERODROME ELEV 665 ft

TWR 130.7  
GND 121.9  
Emerg 121.5

CONSULT NOTAM FOR LATEST INFORMATION

CONNAUGHT / KNOCK

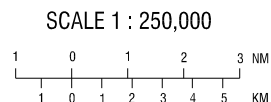


MINM ALT 2000ft  
1 MIN

Visual Holding Pattern  
(Based on TAS 120 kts)

Note 1: In the event of a radio failure :

- Aircraft from the North, route via Tobercurry not above 2000ft to the Charlestown Hold
- Aircraft from the South, route via Ballyhaunis not above 2000ft to the Kilkelly Hold to receive landing instructions from the Control Tower using the ALDIS lamp.



Mapping based on Ordnance Survey Ireland by Permission of the Government © Government of Ireland Permit Number 7109

CHANGE : New Chart