

INSTRUMENT APPROACH CHART- ICAO

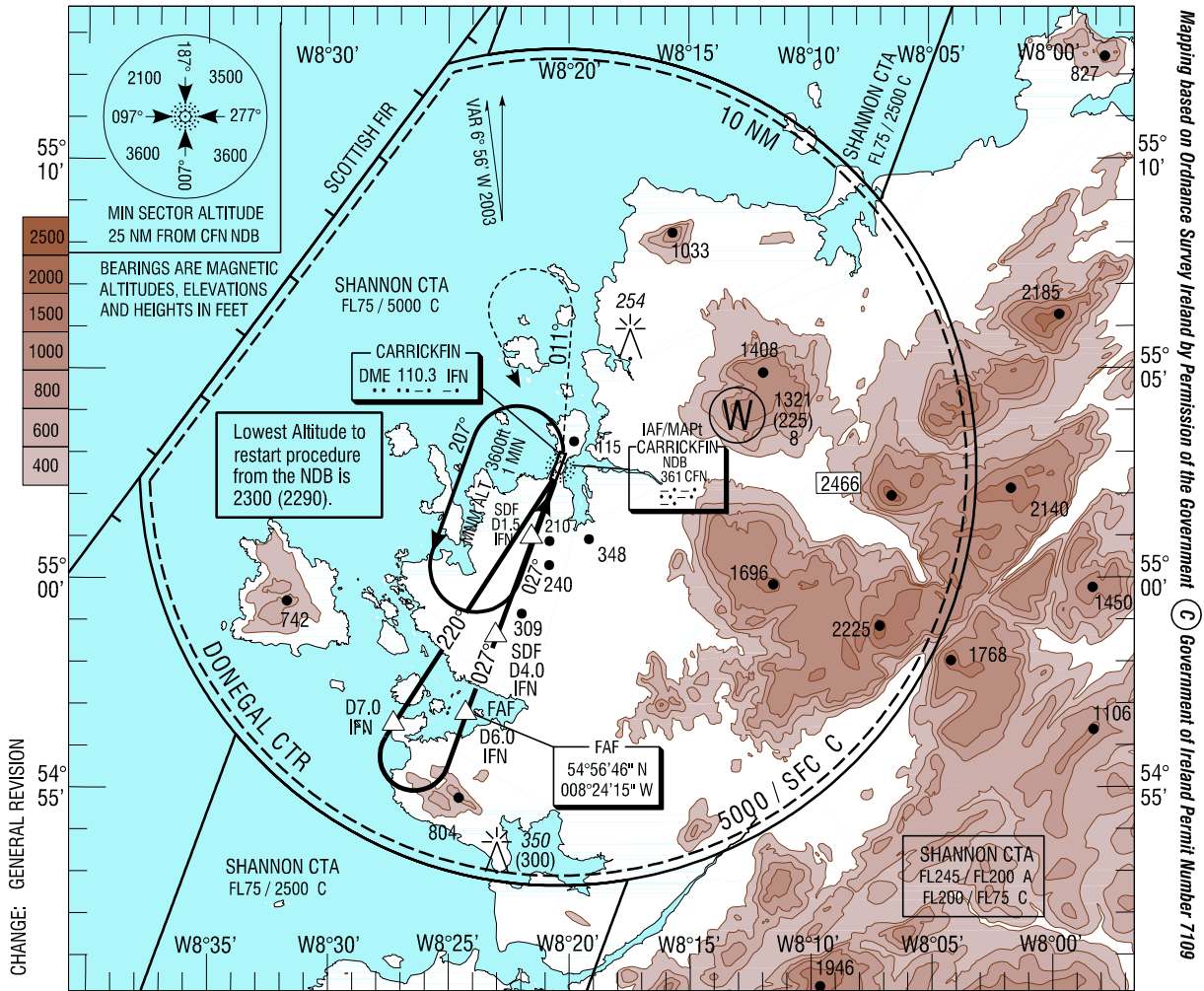
AERODROME ELEV 30 ft
 HEIGHTS RELATED TO THR
 RWY 03 - ELEV 10 ft

Tower 129.8
 ATIS 129.925
 AFS 129.8

CONSULT NOTAM FOR LATEST INFORMATION

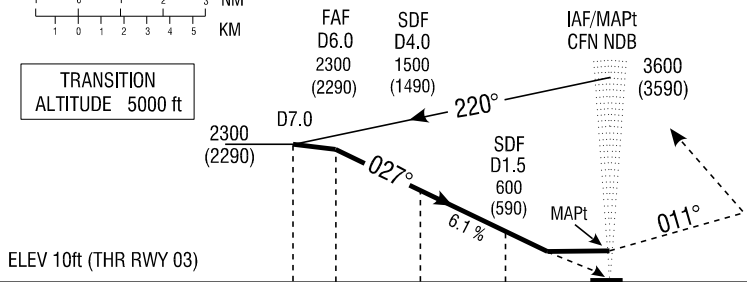
DONEGAL / DONEGAL NDB/DME RWY 03
 (ACFT CAT A, B)

PROCEDURE NOT AVAILABLE WITHOUT DME



SCALE 1 : 330,000
 1 0 1 2 3 NM
 1 0 1 2 3 4 5 KM

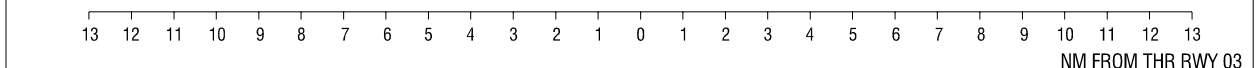
TRANSITION ALTITUDE 5000 ft



MISSED APPROACH: At or before MAPt climb straight ahead. At 800 (790)ft climbing turn left onto 011°M. At 1200 (1190)ft or 3 DME IFN whichever is later climbing left turn to return to NDB CFN to hold 3600 (3590)ft or as directed.

ELEV 10ft (THR RWY 03)

DME READS ZERO AT RWY 03 THR



OCA (H)	A		B		Note: Instrument approaches only available when Air Traffic Control Zone is active unless authorised by Operating Standards Dept of the Irish Aviation Authority.	Recommended profile on Final Approach Descent Rate 6.1% (3.5°), 370ft / NM							
	460 (450)		650 (620)			DME	5 DME	4 DME	3 DME	2 DME	1 DME		
Straight - in Approach	460 (450)		650 (620)			ALT/HT	1910 (1900)	1550 (1540)	1180 (1170)	810 (800)	440 (430)		
Visual Manoeuvring	650 (620)					Ground speed	kts		70	80	100	120	140
						Rate of descent	ft / min		430	495	615	740	865