

INSTRUMENT APPROACH CHART - ICAO
AERODROME ELEV 81 ft
 HEIGHTS RELATED TO THR
 RWY 26 - ELEV 81 ft

Tower 122.5
 RADAR 121.4
 Control 124.7

CONSULT NOTAM FOR LATEST INFORMATION

GALWAY / GALWAY
ILS RWY 26
 (ACFT CAT A, B, C)

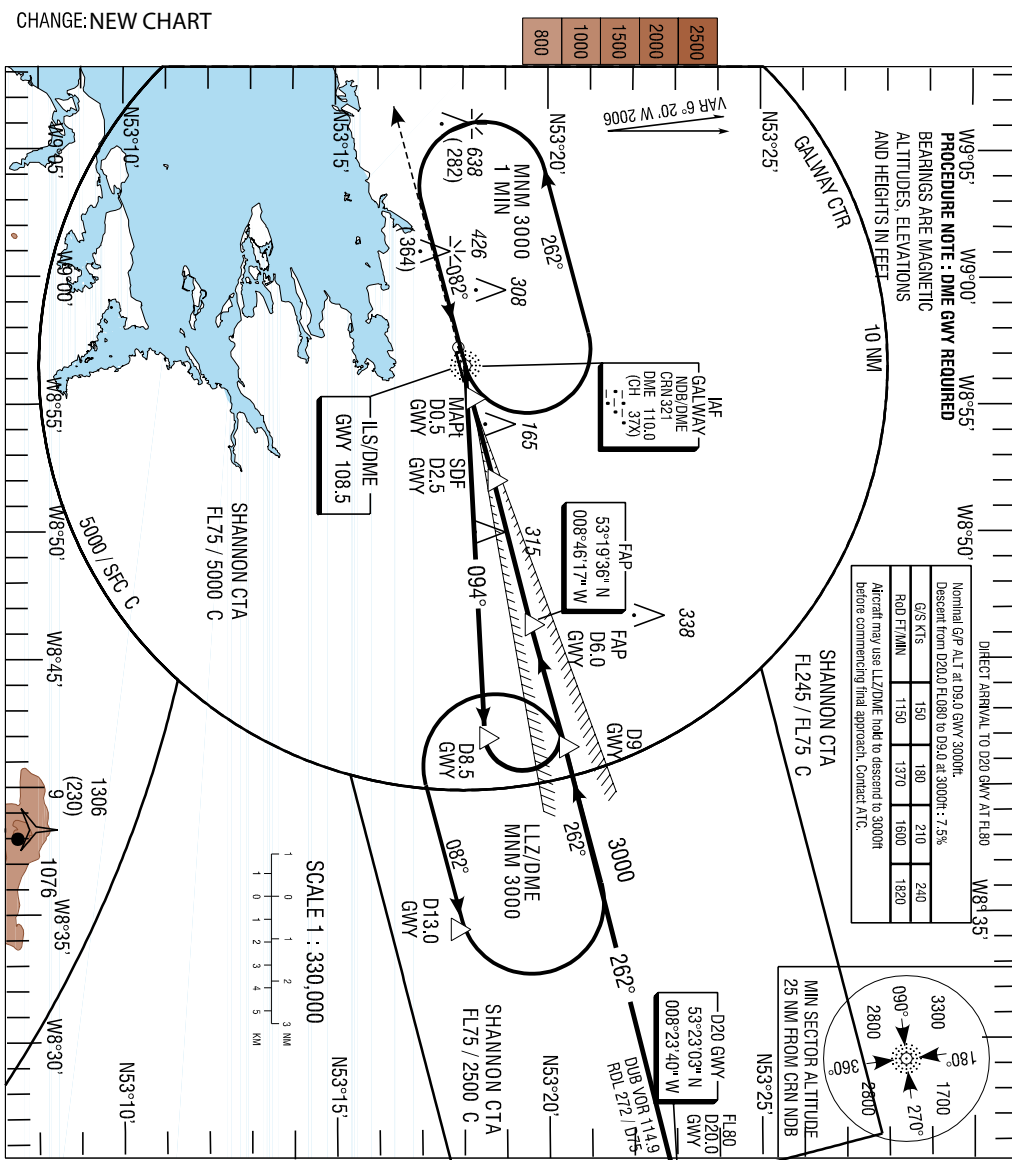
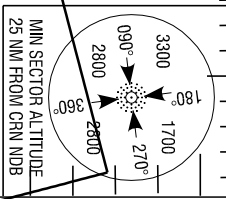
W9°05' W9°00' W8°55' W8°50' W8°45' W8°40' W8°35'

PROCEDURE NOTE : DME GWMY REQUIRED
 BEARINGS ARE MAGNETIC
 ALTITUDES, ELEVATIONS
 AND HEIGHTS IN FEET

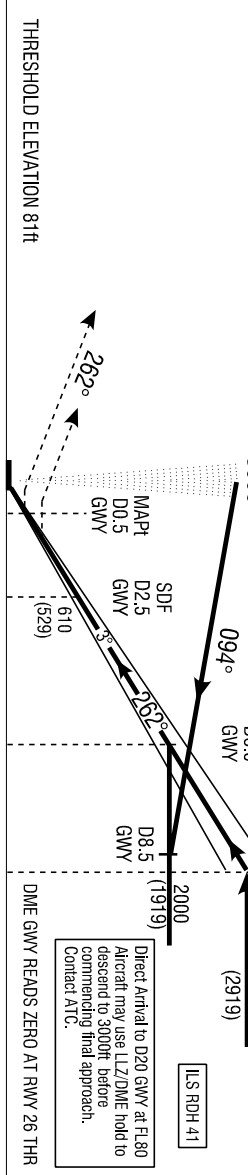
DIRECT ARRIVAL TO D20 GWMY AT FL80

| | | | | |
|--------------------------------------|---|------|------|------|
| Nominal G/P ALT at D9.0 GWMY 3000ft. | Descend from D20.0 FL080 to D9.0 at 3000ft : 7.5% | | | |
| G/S FTS | 150 | 180 | 210 | 240 |
| RdD FT/MIN | 1150 | 1370 | 1600 | 1820 |

Aircraft may use LLZ/DME hold to descend to 3000ft before commencing final approach. Contact ATC.



MISSED APPROACH: Climb straight ahead to 3000 (2919)ft. Contact ATC. In the event of Radio Failure. See Note 2.



GLIDEPATH / RECOMMENDED PROFILE

| RATE OF DESCENT | G/P 3°, 5.2%, 320FT/NM | | |
|-----------------|------------------------|----------|-------------|
| G/S/KT | FT/MIN | DME GWMY | ALTHGT |
| 140 | 750 | 5 | 1720 (1639) |
| 120 | 640 | 4 | 1400 (1319) |
| 100 | 530 | 3 | 1080 (999) |
| 80 | 430 | 2 | 760 (679) |
| | | 1 | 440 (359) |

| OCA (OCH) | | VM(C) OCA (OCH AAL) |
|-----------|------------|---------------------|
| ILS CAT I | A | 276 (195) |
| | B | 288 (207) |
| LLZ/DME | 420 (339) | |
| | TOTAL AREA | |
| | | 610 (529) |
| | | 720 (639) |
| | | 820 (739) |

NOTE 1 : INSTRUMENT APPROACHES ONLY AVAILABLE WHEN AIR TRAFFIC CONTROL ZONE IS ACTIVE
 UNLESS AUTHORISED BY THE OPERATING STANDARDS DEPARTMENT OF THE IRISH AVIATION AUTHORITY.
NOTE 2 : IN THE EVENT OF RADIO FAILURE, ON REACHING 3000(2929)FT TURN LEFT TO NDB CRN AT 3000FT.