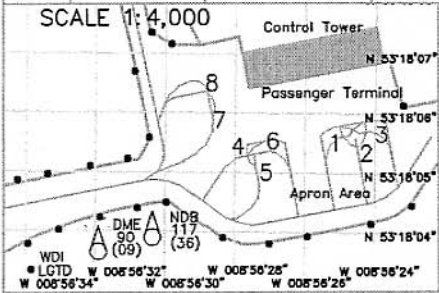
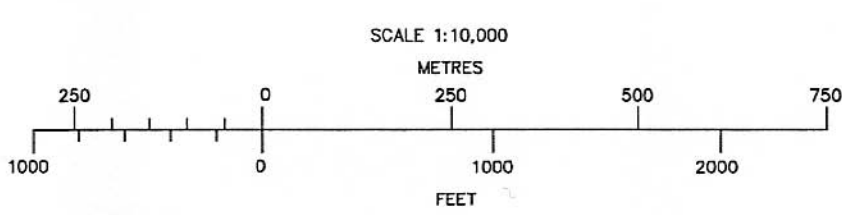
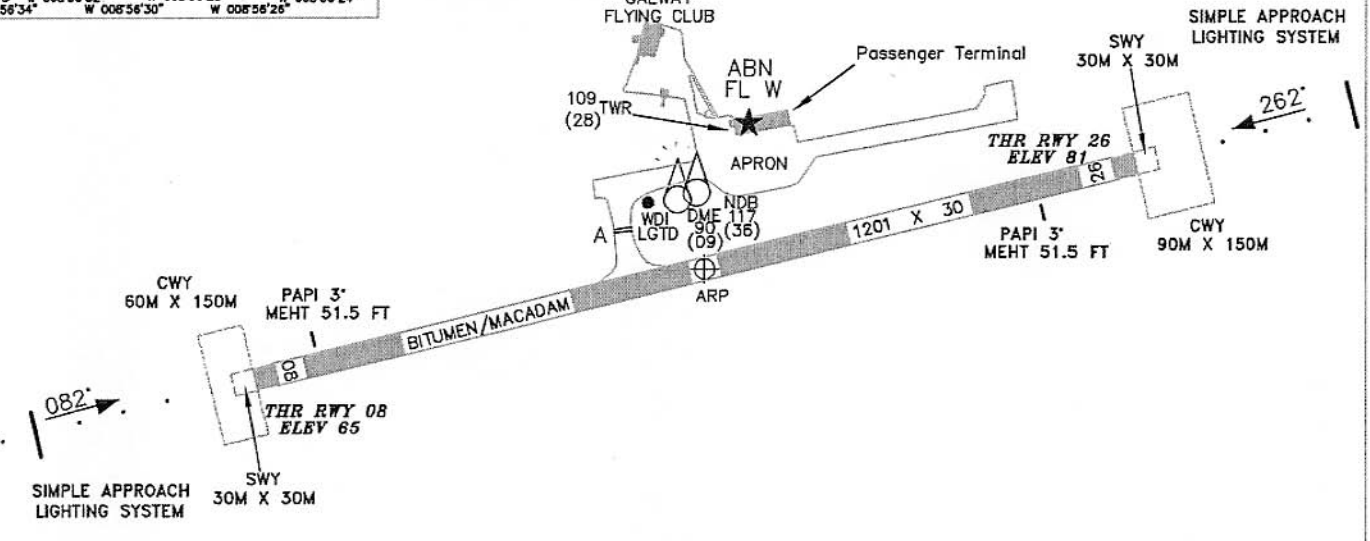


AERODROME CHART - ICAO 53 18 00.63 N AERODROME ELEV 81FT TWR 122.5 CONSULT NOTAM FOR LATEST INFORMATION GALWAY AIRPORT/ IRELAND  
 008 56 29.73 W APRON ELEV 73FT ATIS 121.825

RWY	DIRECTION	THR	BEARING	STRENGTH	LEGEND
08	082°	53 17 55.61 N 008 57 01.89 W	PCN 16/F/C/Y/T		AIRCRAFT STAND
26	262°	53 18 05.41 N 008 55 59.11 W			RUNWAY HOLDING POSITION MARKING



BEARINGS ARE MAGNETIC.  
 LINEAR DIMENSIONS IN METRES.  
 ELEVATIONS IN FEET AMSL.  
 HEIGHTS IN FEET ABOVE AERODROME ELEVATION SHOWN IN BRACKETS.  
 ANNUAL RATE OF CHANGE - 11° W  
 VAR 6°42' W 2004



AMENDMENT RECORD		
NO.	DATE	ENTERED BY

SCALE 1:10,000  
 MARKING AIDS RUNWAY 08/26



Stand	Latitude	Longitude	Max Wingspan	Max Length	Conditions
01	53 18 05.60 N	008 56 25.02 W	-	-	Self Manoeuvring
02	53 18 05.38 N	008 56 24.47 W	-	-	Self Manoeuvring
03	53 18 05.71 N	008 56 24.10 W	-	-	Self Manoeuvring
04	53 18 05.25 N	008 56 27.90 W	-	-	Self Manoeuvring
05	53 18 05.03 N	008 56 27.34 W	-	-	Self Manoeuvring
06	53 18 05.37 N	008 56 26.97 W	-	-	Self Manoeuvring
07	53 18 05.88 N	008 56 28.60 W	-	-	Self Manoeuvring
08	53 18 06.44 N	008 56 28.81 W	-	-	Self Manoeuvring

NOTE 1: TAXIWAY AND APRON : PCN 16/F/C/Y/T.  
 NOTE 2: TAXIWAY A : 23M WIDE.  
 NOTE 3: APRON SURFACE : BITUMEN / MACADAM.  
 NOTE 4: PUSH BACK NOT AVAILABLE ON STAND.

CHANGES: NEW CHART.